

PLAFO 800 FLAT



Round surface mounted or suspended luminaire. Top quality SMD LED module with colour consistency MacAdams ≤ 3 , extensive portfolio of lumen ranges, CCTs and spectra. Variety of drivers: standard EVG on/off, DALI and wireless controlled as MasterConnect or Casambi on request. Built-in or remote, wireless occupancy & daylight sensor available to allow significant energy savings and wireless connectivity. Mounting on any type of ceiling. Body is made of aluminium and steel. Standard colour RAL 9003S, any other colour from basic RAL range available at no extra cost. Variety of diffusers, lumen outputs and drivers allows to use this luminaire in different types of lighting projects.

Luminous flux & Luminaire Power tolerance up to 10%. System power consumption depends on components used. Luminous efficacy depends on type of LED's, electronics, optics and diffuser. The most up to date technical parameters can be found on our website and in database of LDT files.

Lighting direction:



PDF datasheet:



PLAFO 800 FLAT

Mounting:	Surface mounted / Suspended
Body material:	Steel and aluminium
Colour:	Standard white RAL 9003S, other RAL colours on request
Lumen output:	Standard up to 8000 lm, any other on request
LED module:	Signify (Philips), Tridonic or equivalent SMD LED module
Colour temperature:	3000/4000K/2700-6500K TW, other on request
Colour Rendering:	CRI>80 in standard, other on request
Driver:	EVG on-off/DALI/TW DT8/MC (MasterConnect)/Casambi, other on request
Wireless control:	Philips MasterConnect / Casambi, other on request
Daylight/Occupancy sensor:	Built-in XC sensor or wireless MCS sensor
Emergency unit:	On request
Operating temperature range:	0°C ... +35°C
IP Class:	IP40 in standard
Power:	220-240V 50/60Hz
Lighting direction:	Direct lighting
Light distribution:	Symmetric
Diffuser:	OP white acrylic, MP19H microprismatic UGR<19
Beam angle:	All types available in our LDT file database
Warranty:	5 Years standard warranty

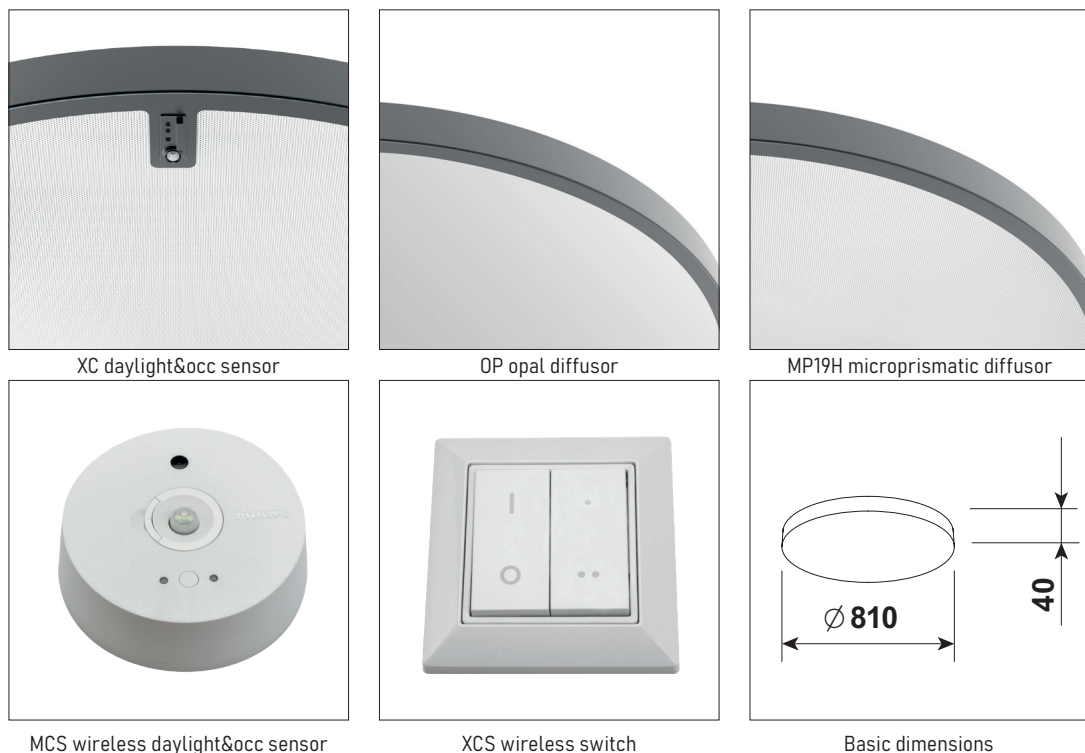
PLAFO 800 FLAT surface mounted, light down
PLAFO 800 FLAT PND suspended, light down



Energy saving MasterConnect wireless lighting control system with daylight and movement detection technology on request.



All current index numbers, lumen outputs, power consumption and many other technical information are available in our 2024 pricelist. Details on wireless lighting control systems on page number 896.



MCS wireless daylight&occ sensor

XCS wireless switch

Basic dimensions



PLAFO 800 FLAT

Product code	Product name	Gross Lumen [lm]	Nett Lumen [lm]	Power [W]	Efficacy [lm/W]	Colour temperature [K]	Optics	Diameter [mm]	Height [mm]	Nett Weight [kg]
Ceiling mounted, light down										
20.02220.83.E.OP	PLAFO 800 FLAT 8000lm / 830 / E / OP	8000	6877	47	146	3000	Symetryczna	Ø 800	40	7,9
20.02220.84.E.OP	PLAFO 800 FLAT 8000lm / 840 / E / OP	8000	6877	47	146	4000	Symetryczna	Ø 800	40	7,9
20.02220.83.E.MPH	PLAFO 800 FLAT 8000lm / 830 / E / MPH	8000	6877	47	146	3000	Symetryczna	Ø 800	40	7,9
20.02220.84.E.MPH	PLAFO 800 FLAT 8000lm / 840 / E / MPH	8000	6877	47	146	4000	Symetryczna	Ø 800	40	7,9
Suspended, light down (suspension set and power cable with ceiling cup included)										
50.02300.83.E.OP	PLAFO 800 FLAT PND 8000lm / 830 / E / OP	8000	6877	47	146	3000	Symetryczna	Ø 800	40	7,9
50.02300.84.E.OP	PLAFO 800 FLAT PND 8000lm / 840 / E / OP	8000	6877	47	146	4000	Symetryczna	Ø 800	40	7,9
50.02300.83.E.MPH	PLAFO 800 FLAT PND 8000lm / 830 / E / MPH	8000	6877	47	146	3000	Symetryczna	Ø 800	40	7,9
50.02300.84.E.MPH	PLAFO 800 FLAT PND 8000lm / 840 / E / MPH	8000	6877	47	146	4000	Symetryczna	Ø 800	40	7,9